



# BATCH PROCESS PRODUCTION ENTRY

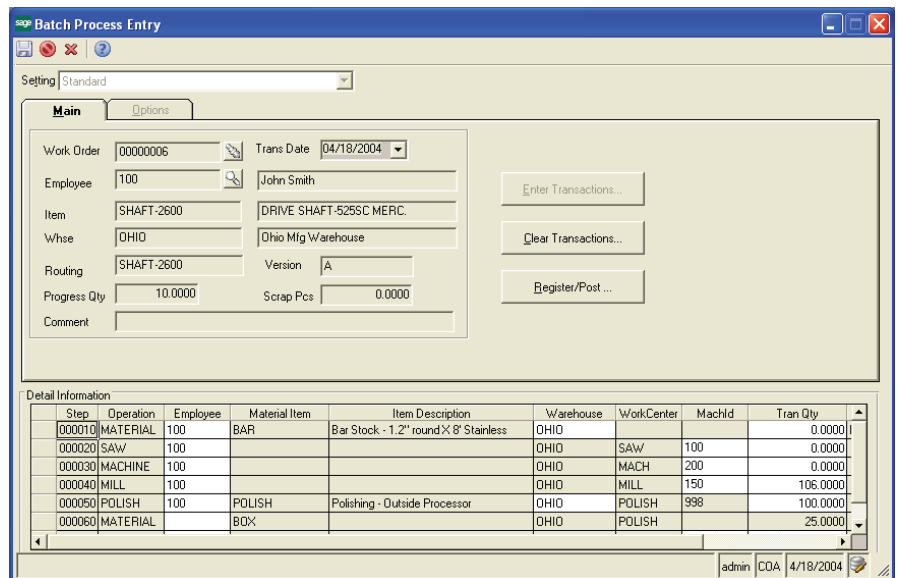
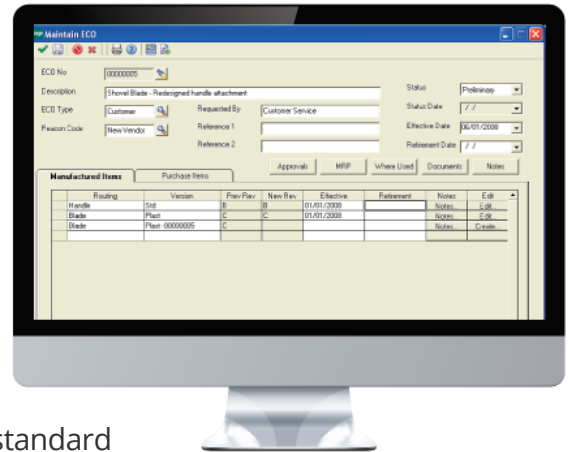
Batch Process Production Entry for food processors or repetitive/lean manufacturers.

Batch Process Production Entry is very useful for batch environments, such as food, beverage, and chemical processing, as well as repetitive or lean manufacturing.

This enhancement is similar to the Production Entry task in the standard Sage 500 ERP Light Manufacturing module. However, instead of creating work orders on-the-fly by posting transactions against the routing, Batch Process Production Entry allows companies to post multiple labor and/or material transactions against open work or batch orders from a single screen.

The screen provides all of the required detail for material, labor, or outside operation reporting. You can also customize the screen to display only certain types of operations related to the work order. You can hide columns or fields, display backflushed and completed steps, and default transaction quantities based on remaining requirements.

Further, the screen provides access to lot, serial, and bin information; supports scrap reason code reporting; and allows you to report production against multiple parts produced for a work order.





## Product Features

### Food Processing

Issue multiple ingredients to a production order at the same time. The standard lot/serial/bin distribution screen from Sage 500 ERP is available for controlled items so that you can distribute lots to production.

### Repetitive Manufacturing

Batch Process Production Entry simulates a repetitive manufacturing environment since you may create a work order for all production in a given period and continue to report production for the finished good item throughout that time period. For example, you may create one order for January and report 1,000 units per day against the order until the end of the period. At the end of the period, you will simply create a new work order and close out the existing work order so that work in process and manufacturing costs are available for your month-end processing.

### Lean Manufacturing

Batch Process Production Entry is very useful for lean manufacturers, especially those operating cell-based or kanban systems where materials are typically back flushed or reported at specific control points within the manufacturing process. For example, if you report a finished good quantity for a shift for a specific cell, the material and labor quantities can be back flushed up to that point in the work order.

### Report Printing

A Batch Process Transaction Register may be viewed and printed as a record of the transactions made from Batch Process Production Entry.

### Industries

- Discrete Manufacturers
- Mixed-Mode Manufacturers
- Repetitive Manufacturing
- Lean Manufacturing
- Batch Process Manufacturing

### Required Modules

- Inventory Management (Sage)

### Suggested Modules

- Enhanced Labor Entry

### Benefits Overview

- Create multiple material or labor transactions at one time (similar to Sage 500 ERP Production Entry)
- Transactions are created against real Work Orders
- Useful for cellular, repetitive, or lean manufacturers who report several transactions at control points against open work orders
- Very useful for food processors who need to issue lots of ingredients to work orders for processing
- Customize material and labor entry screens

### ClientCare Plans

- Free Upgrades and Hot Fixes
- Unlimited Product Support
- Installation Assistance & Training



## Hide Columns

You can easily select which columns or fields you want to display in the detail grid when entering transactions. This is especially useful if you don't need to see lot, serial, bin, scrap, or other information.

## Lot/Serial/Bin Integration

You can click a button built into the detail grid to select and distribute lot, serial, and bin quantities for each transaction.

## Scrap Reason Codes

The standard Sage 500 ERP Scrap Reason Code form is automatically launched when you enter a scrap quantity.

## Multiple Parts Produced

You may report material and/or labor transactions against any item listed on the parts produced tab for a work order.

## Default Settings

The employee id may be defaulted from the header to detail transactions. Additionally, you may default transaction quantities in the detail grid to the required quantity minus the quantity reported to-date.

## Copy Comments

Copy comments and the employee id from the header transaction to all transactions processed from the Employee batch process production entry screen. Comments and employee id are defaulted to each step in the transaction grid but may be overridden at the step detail level.

## Backflushed/Completed

You may optionally show both backflushed or completed steps in the detail grid.

## Default Bins

A default bin can be defined for material issues transactions and can be overridden if a different bin is desired for the transaction.