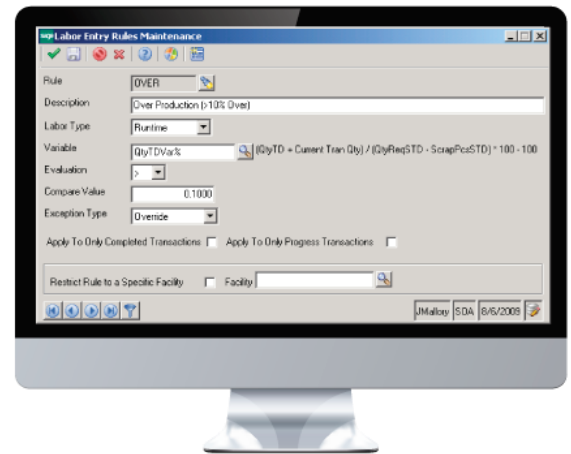




## ANYTIME 500 ENHANCED LABOR ENTRY

Streamline labor entry with rapid grid entry, batch transaction processing, and data validation.

Labor-intensive environments can achieve huge returns on investment by streamlining labor entry and transaction processing. In some environments, it is ideal to post labor transactions in real-time through the Sage 500 ERP labor entry screen or via the Shop Floor Control menu. However, in many companies, it is more efficient to have employees complete paper job tickets which are entered into the system at the end of each shift or at the end of the day.



Enhanced Labor Entry for Sage 500 ERP provides a multi-functional labor entry grid allowing data entry personnel to quickly enter multiple labor tickets in to a single screen while posting the transactions in a single batch.

All labor entries tagged to the batch can be reviewed by management prior to posting the transactions to work in process, the general ledger and job cost files.

Transaction No.	Trans. Date	Employee	Work Order	Step	Quantity	Scrap Pcs	Start Time	Minutes	AM/PM
00000142	08/26/2010	100	00001032-02	000030	50.0000		8:00		AM
00000143	08/26/2010	100	00001032-02	000030	40.0000		10:00		AM
00000144	08/26/2010	200	00001032-03	000055	100.0000		8:00		AM
00000145	08/26/2010	300	00001033	000040	500.0000		12:00		PM

This approval process helps manufacturers eliminate data entry errors—especially on labor progress steps where labor transactions affect critical cost and financial data.

Further, new validation rules reduce labor entry errors by assuring that data falls within acceptable tolerances for labor and machine efficiency and routing standards. In addition, data validation can also manage entries for scrap quantities, run hours, downtime, setup time, and more.

Improved data entry, one-step processing, management review, and data validation can save hundreds of hours and thousands of dollars in lost manpower by eliminating time spent manually adjusting general ledger accounts, WIP costs, inventory balances, and other inaccurate data.



## Product Features

### Express Grid Entry

Customer service or administrative personnel can enter multiple job tickets into Sage 500 ERP using an intuitive grid for heads-down data entry. The grid format can easily cut several hours off data entry for many labor-intensive manufacturers.

### Batch Posting Process

All labor transactions, whether entered via the grid or through the traditional 500 ERP labor entry screen is posted to the current labor batch prior to processing.

### Review Process

Each labor entry batch may be reviewed by management prior to posting transactions. Management review often circumvents data processing errors—especially for labor progress step transactions which affect critical cost and financial information.

### Labor Validation Rules

Management can establish a user-defined percentage over or under acceptable tolerances for many different labor-related data points including labor/machine efficiency, scrap quantity, run hours, down time, and setup time for both current and to-date transactions. For example, managers may want to prevent scrap quantities from being entered that are 20% over acceptable standards.

### Material Validation Rules

You can setup rules to validate that material issues are not over or under issued by a specific percentage based on predefined routing standards.

### Grid Defaults

The date and employee id default to the next line in the labor entry grid when you tab to the next row. The start time automatically defaults from the end time from the previously entered labor transaction.

### Labor Sequence

Step complete rules allow users to define a workflow which must be followed for manufacturing operations. Labor cannot be entered until the previous step has been marked as complete. This is common in many manufacturing environments – especially in assembly lines or repetitive manufacturing.

#### Industries

- Discrete Manufacturers
- Mixed-Mode Manufacturers
- Repetitive Manufacturing
- Lean Manufacturing
- Light Manufacturing & Assembly

#### Required Modules

- Advanced Manufacturing (Sage)

#### Suggested Modules

- Batch Process Prod. Entry (e2b)

#### Benefits Overview

- Multi-transaction labor entry
- Review labor entries prior to posting progress transactions
- Quick data entry via grid
- Validation rules for labor entries
- Validation rules for material issues
- Post labor transactions in batches

#### ClientCare Plans

- Free Upgrades and Hot Fixes
- Unlimited Product Support
- Installation Assistance & Training



## Evaluation Criteria

Labor rules help companies improve quality by preventing data entry errors. For example, rules may be established to prevent entry of labor transactions with excessive material issues or those with excessive run time. Most often, these transactions occurred because of data entry error.

## Rule Comparisons

Users create their own rules including the comparison value. This is important since some companies may want to limit efficiency percentages to 90% (comparison value) while others may have much different expectations depending on the nature of their product and process.

## Rule Severity

Rules may be established to warn the user that they have violated a labor rule. Rules may also be defined so that supervisors must override violating transactions. Rules may also be established to completely prevent or restrict the transaction from happening.

## Cascading Rules

You may setup multiple rules and identical rules that vary by severity. For example, a user may be warned if they enter more than 3 hours of labor as defined in one rule while they are required to obtain supervisor permission for transactions over 4 hours.

## Completed Transactions

Labor rules may be applied only to completed transactions. This would allow you to prevent users from posting transactions against steps already marked as complete

## Progress Transactions

Labor rules may be applied only to progress transactions which are often tightly monitored due to the fact that the progress transaction updates finished goods inventory and the general ledger.

## Facility Rules

All validation rules may be defined globally or for specific manufacturing facilities.