

MAPADOC

White Paper

MAPADOC for Sage 500



By: Siobhan Finders
Senior Product Manager
MAPADOC

120 Eagle Rock Ave, Suite 330 • East Hanover, NJ 07936

Phone: 866.627.2362 • Fax: 973.758.6120

www.MAPADOC.com

Contents

About MAPADOC..... 3

Features..... 5

 Intuitive and Easy to Use 5

 Flexible and Customizable..... 6

 Large Selection of Supported Documents..... 7

About SWK Technologies..... 8

Contact Us..... 8

MAPADOC for Sage 500

SWK Technologies

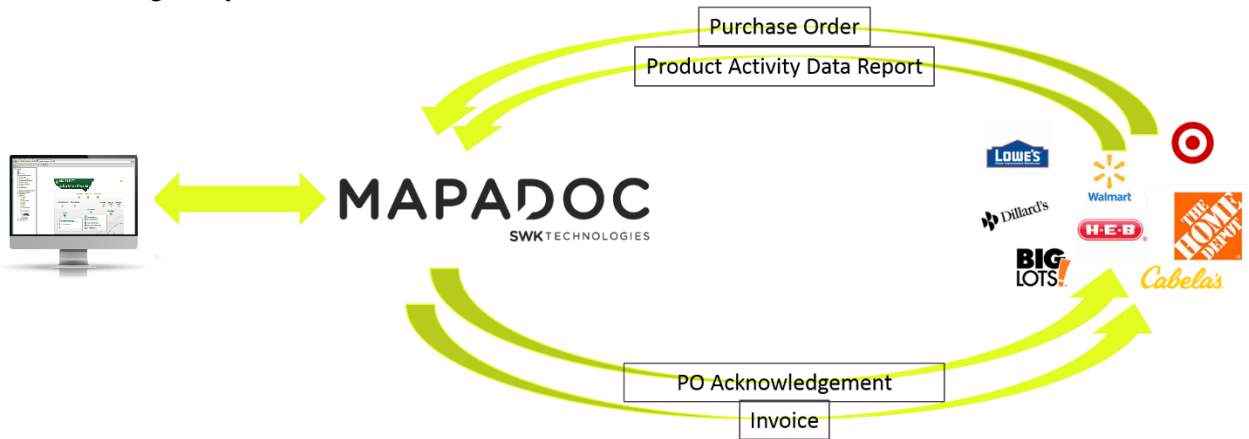
About MAPADOC

Developed in the late 1990's, MAPADOC was created to fill the need for integrated EDI without the time and expense required for custom development. First integrated with Sage 100, MAPADOC became the go to EDI solution when Sage turned over their EDI customers to MAPADOC in 1998. As MAPADOC matured, SWK Technologies developed integrations with Sage 500 and Sage X3. **Today, MAPADOC for Sage X3 is the only Sage certified, fully integrated, embedded EDI solution for Sage X3.**

MAPADOC's seamless integration with Sage 500 provides customers with peace of mind that their EDI needs are being handled from beginning to end. Working with the translator, MAPADOC collects the inbound EDI documents, processes them and brings them into Sage 500. On the outbound side, when triggered by activities within Sage 500, MAPADOC will process and send the outbound documents to the trading partner.

MAPADOC is configured and sold in four distinct modules, each module containing specific document sets.

- ✓ The Sales Order Processing module includes the inbound Purchase Order (850/875), the outbound Invoice (810/880), the Product Activity Data Report (852) and the PO Acknowledgement (855). The Sales Order module is used by businesses that supply goods to large retailers, big box stores, dot.com vendors and grocery stores.



- ✓ The ASN Module contains the outbound Advance Ship Notice (856). The Advance Ship Notice document is often required by large retailers as it gives them detailed shipping information.



- ✓ The Purchase Order Processing module includes the inbound Invoice (810) and the outbound Purchase Order (850). The Purchase Order module is used by businesses that purchase goods from suppliers. It is possible that a company would use both the Sales Order module and the Purchase Order module if their raw materials supplier requires EDI.



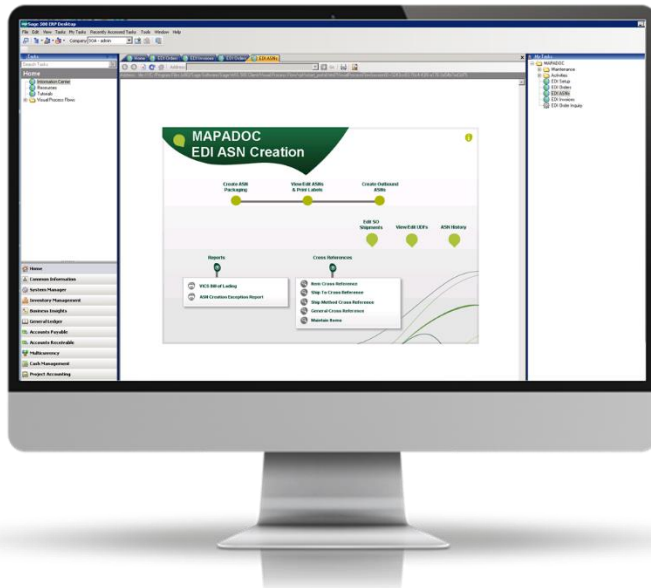
- ✓ The Remote Warehouse module includes documents normally exchanged by businesses that utilize outside warehouses or third party logistics (3PL) companies. The warehouse documents include the outbound Warehouse Shipping Order (940) and the inbound Warehouse Shipping Advice (945). These documents serve as an order to a remote warehouse that instructs them to ship orders and as confirmation of shipment. Many enterprise companies use 3PLs and will implement these document sets.



Features

Intuitive and Easy to Use

Built into the Sage 500 platform using the Sage 500 code and workflow, MAPADOC is easy to learn and intuitive to use.



Because MAPADOC is built right into the Sage 500 platform, as documents are processed through MAPADOC, they are imported using the Sage 500 business logic to ensure postings throughout the product are handled as if they originated in Sage 500. Additional validation and translation is performed through the cross-reference tables designed to ensure data is complete and the business terms used are understood by each side of the transaction.

Flexible and Customizable

MAPADOC provides the flexibility for you to handle EDI the way you want to with the ability to manage mapping or have the MAPADOC team do it for you. In addition, with the ability to work with multiple translators, MAPADOC enables you to choose the translator that fits both your budget and your business needs.

Just like Sage 500, MAPADOC is customizable to fit your business processes and workflow. If you want a data field from your EDI to be placed in a specific field in Sage 500, it is taken care of with minimal effort. Work the way you want to, not the way a vendor tells you!



Large Selection of Supported Documents

MAPADOC for Sage 500 supports a large selection of EDI document sets:

Inbound	Outbound
Purchase Order (850)	Invoice (810)
Cash Receipts Creation (820)	PO Acknowledgement (855)
Product Activity Data Report (852)	Advance Ship Notice (856)
Warehouse Shipping Advice (945)	Warehouse Shipping Order (940)
	Inventory Advice (846)
	EDI Catalog Information (832)
Invoice (810 for vendor side EDI)	Purchase Order (850 for vendor side EDI)
Process Routing Instructions (754)	Routing Request (753)
	Sales Order Status Report (870)

About SWK Technologies

SWK Technologies is a business application and consulting company providing strategies and solutions to meet our clients' information and business management needs. As a Sage Software Authorized Business Partner, Sage Certified Gold Development Partner, Sage Certified 500 Partner and Sage Authorized Training Center, we offer best-of-breed solutions for accounting and business management, financial reporting, ERP, CRM, job costing, EDI, and warehouse management.

As a Sage Development Partner, SWK can serve its business partners and customers by offering open source programming and customization. We also specialize in collaborative commerce – the communication and cooperation between suppliers and customers – with MAPADOC, a robust EDI solution that integrates seamlessly with the business management solutions we sell and support.

Contact Us

Phone Numbers

866.627.2362 toll free

973.758.6120 fax

Support Contacts

support@mapadoc.com

973.758.6500 - press 1 for support

Corporate Headquarters

MAPADOC

120 Eagle Rock Ave, Suite 330

East Hanover, NJ 07936